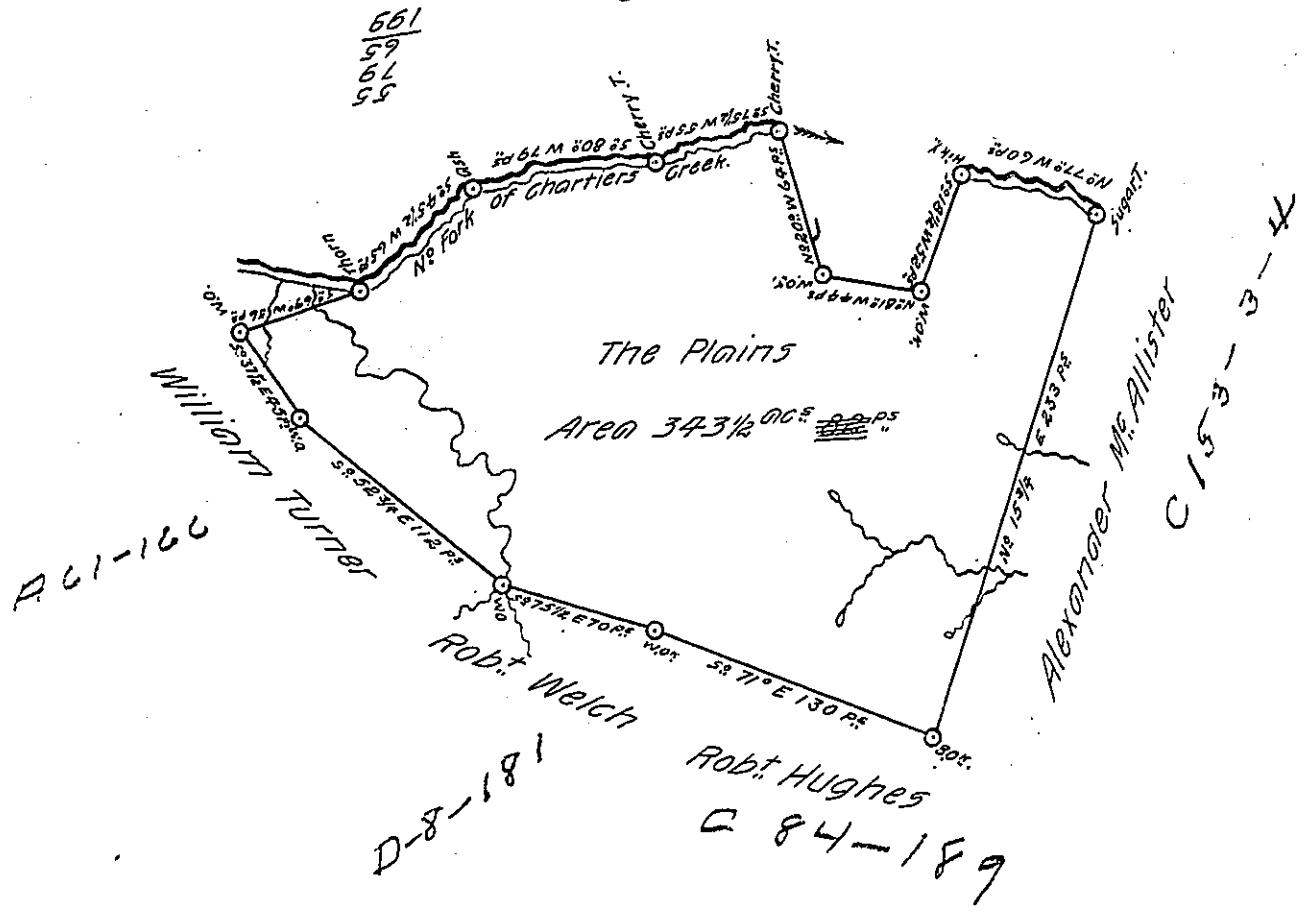


48  
8  
12

X  
8  
P12-229  
1-23

a 50-69



A draught of a survey called "The Plains" on ye N<sup>o</sup>. Fork of Chartiers C<sup>k</sup>. in Washington County containing 343 acs 82<sup>ps</sup> strict measure executed Ap<sup>l</sup>. ye 7<sup>o</sup>. 1786 in consequence of a certift<sup>t</sup> granted to Sam<sup>l</sup>. McBride for 400 acs by the commiss<sup>rs</sup>. appointed by Virginia to adjust the claims to unpaten<sup>ted</sup> <sup>lands</sup> in the Counties Monong<sup>a</sup>. Yohg<sup>a</sup>. and Ohio and duly entered with the County Surveyor as appears from ye list of entries transmitted from the Surveyor Generals office ent<sup>d</sup> 8<sup>th</sup> Mar. 1780 ret<sup>d</sup> 18 Jan-87

Jm<sup>o</sup>. Lukens Esq<sup>t</sup>. S. Gen<sup>l</sup>. }  
 Presley Nevill }  
 Matt<sup>w</sup>. Ritchie } D. S.

IN TESTIMONY that the above is a copy of the original remaining on file in the Department of Internal Affairs of Pennsylvania, made conformably to an Act of Assembly approved the 16th day of February, 1833, I have hereunto set my Hand and caused the Seal of said Department to be affixed at Harrisburg, this twenty third day of November 1905

*James P. Ross*  
 Secretary of Internal Affairs.